

# Спектрометр Фурье

## ANALECT-PCM-1000, ANALECT-PCM-5000

### Технические характеристики

Архангельск (8182)63-90-72  
Астана +7(7172)727-132  
Белгород (4722)40-23-64  
Брянск (4832)59-03-52  
Владивосток (423)249-28-31  
Волгоград (844)278-03-48  
Вологда (8172)26-41-59  
Воронеж (473)204-51-73  
Екатеринбург (343)384-55-89  
Иваново (4932)77-34-06  
Ижевск (3412)26-03-58  
Казань (843)206-01-48  
Калининград (4012)72-03-81  
Калуга (4842)92-23-67  
Кемерово (3842)65-04-62  
Киров (8332)68-02-04

Краснодар (861)203-40-90  
Красноярск (391)204-63-61  
Курск (4712)77-13-04  
Липецк (4742)52-20-81  
Магнитогорск (3519)55-03-13  
Москва (495)268-04-70  
Мурманск (8152)59-64-93  
Набережные Челны (8552)20-53-41  
Нижний Новгород (831)429-08-12  
Новокузнецк (3843)20-46-81  
Новосибирск (383)227-86-73  
Орел (4862)44-53-42  
Оренбург (3532)37-68-04  
Пенза (8412)22-31-16  
Пермь (342)205-81-47  
Ростов-на-Дону (863)308-18-15

Рязань (4912)46-61-64  
Самара (846)206-03-16  
Санкт-Петербург (812)309-46-40  
Саратов (845)249-38-78  
Смоленск (4812)29-41-54  
Сочи (862)225-72-31  
Ставрополь (8652)20-65-13  
Тверь (4822)63-31-35  
Томск (3822)98-41-53  
Тула (4872)74-02-29  
Тюмень (3452)66-21-18  
Ульяновск (8422)24-23-59  
Уфа (347)229-48-12  
Челябинск (351)202-03-61  
Череповец (8202)49-02-64  
Ярославль (4852)69-52-93



## FTIR/FT-NIR Analyzer

The **ANALECT®PCM™** Series FTIR/FT-NIR process analyzers measure physical, chemical and compositional properties of liquids, solids and gases.

- On-line, in-situ, and at-line monitoring of batch and continuous processes.
- Displays up to 15 properties at once and measures up to 30 properties per stream.
- Optical multiplexing capabilities provide analysis of up to 16 process streams using fiber optic or extractive stream switching.
- Utilizes process-proven ANALECT Diamond 20 Transept™ optical head:
  - Vibration tolerant optical system allows placement of analyzer in hostile industrial environments.
  - Absolute optical alignment of components provides for repeatable spectra, allowing calibrations to remain stable indefinitely.
- SpectraRTS™ software engineered exclusively for on-line monitoring, allowing use by engineers, maintenance personnel, and chemists.



Full chemometric modeling capability including SpectraQuant™, MATLAB® Unscrambler®, & Pirouette®

- Communication options including OPC®, Modbus® as well as analog protocols.
- The PCM monitors versatility allows for a wide range of applications including:
  - Chemicals
  - Petrochemicals
  - Polymers
  - General manufacturing
  - Pharmaceuticals
  - Gas analysis

### SAMPLING FLEXIBILITY

	Mid IR	NearIR
<b>Liquids</b>		
Transmission Probes	■	■
ATR Probes	■	
Cross-line Probes	■	■
Slip-stream Probes	■	■
<b>Gases</b>		
Gas Cells	■	
<b>Solids</b>		
Diffuse Reflectance		■



## Specifications

### Spectrometer

Interferometer:

- Transept IV<sup>™</sup> hermetically sealed module with refractively scanned design
- Optical range: 7000–450 cm<sup>-1</sup> Mid-IR; 12000–1200 cm<sup>-1</sup> NIR
- Detector options: DTGS Pyroelectric; InAs; InGaAs; MCT

### Analysis Time

- 30–60 sec. for multiple property predictions

### Ambient Environment Conditions

- 0–38°C standard ambient temperature
- -20–50°C with optional heating and A/C system

### Area Classification

- ATEX/CENELEC Zone 1 & 2
- NFPA Class I, Division 1 & 2

### Process Control Interface

- Modbus, OPC and analog protocols
- Fiber optic Ethernet and serial communications options

### Utility Requirements—Analyzer and Cell Enclosure

- Main power 115/230 VAC 50/60Hz single phase 1500 watts

### Instrument Dimensions: Optical Head and Sample Box

- 220cm H x 97cm W x 46cm D (87 H x 38 W x 18 D)
- Weight: 270kg (600lb)

## SpectraRTS<sup>™</sup> Software Drives Your Process



### Automate many aspects of your process

- Control I/O to switch valves and monitor a variety of sample system conditions.
- Collect spectra and apply quantitative analysis routines.
- Transmit product properties, instrument QC data, and alarms via versatile communications protocols.
- Implement calibration tools and programming flexibility
- Apply a wide variety of quantitative analysis routines including: SpectraQuant<sup>™</sup>, MATLAB<sup>®</sup> and Pirouette<sup>®</sup>
- Utilizes Visual Basic for Applications (VBA) compatible scripting language to achieve total programming flexibility
- Operate the system remotely by using pcANYWHERE<sup>™</sup> or Timbuktu<sup>®</sup> software.

### Validate and diagnose your system

- Implement on-line validation methods, such as ASTM D6122.
- Automatically monitor and trend the system's "health" with Remote R<sub>x</sub> software for preventative maintenance scheduling.
- Access the on-line help system for quick reference.

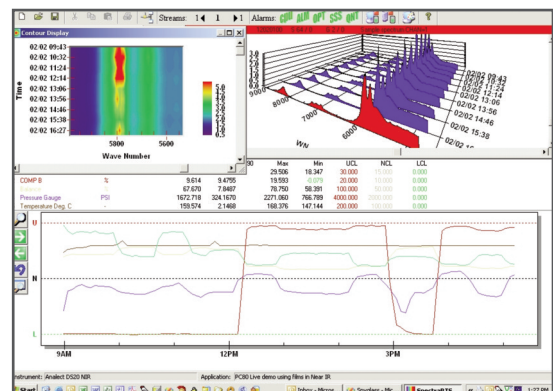
The ANALECT<sup>®</sup>Diamond 20<sup>™</sup> analyzer supports on-line systems with process development utilizing the same optical bench as the ANALECT PCM for instrument to instrument calibration data transfer.

SpectraStudio<sup>™</sup> a Windows<sup>®</sup> based data collection and analysis

program is designed to provide a high degree of flexibility to users operating in a laboratory environment.

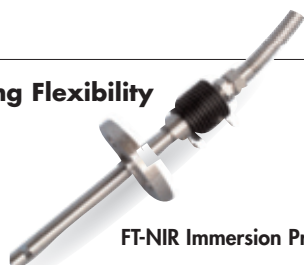


ANALECT Diamond 20

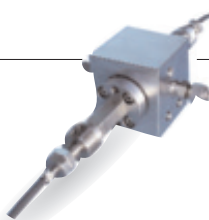


3D Spectral Display contour plots with property trendlines

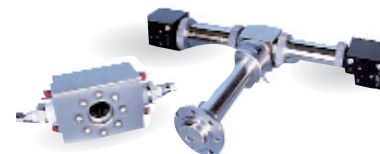
## PCM Sampling Flexibility



FT-NIR Immersion Probe



FT-NIR Cross-Line Probe



Mid-IR ATR Diamond Probe

По вопросам продаж и поддержки обращайтесь:

Архангельск (8182)63-90-72  
Астана +7(7172)727-132  
Белгород (4722)40-23-64  
Брянск (4832)59-03-52  
Владивосток (423)249-28-31  
Волгоград (844)278-03-48  
Вологда (8172)26-41-59  
Воронеж (473)204-51-73  
Екатеринбург (343)384-55-89  
Иваново (4932)77-34-06  
Ижевск (3412)26-03-58  
Казань (843)206-01-48  
Калининград (4012)72-03-81  
Калуга (4842)92-23-67  
Кемерово (3842)65-04-62  
Киров (8332)68-02-04

Краснодар (861)203-40-90  
Красноярск (391)204-63-61  
Курск (4712)77-13-04  
Липецк (4742)52-20-81  
Магнитогорск (3519)55-03-13  
Москва (495)268-04-70  
Мурманск (8152)59-64-93  
Набережные Челны (8552)20-53-41  
Нижний Новгород (831)429-08-12  
Новокузнецк (3843)20-46-81  
Новосибирск (383)227-86-73  
Орел (4862)44-53-42  
Оренбург (3532)37-68-04  
Пенза (8412)22-31-16  
Пермь (342)205-81-47  
Ростов-на-Дону (863)308-18-15

Рязань (4912)46-61-64  
Самара (846)206-03-16  
Санкт-Петербург (812)309-46-40  
Саратов (845)249-38-78  
Смоленск (4812)29-41-54  
Сочи (862)225-72-31  
Ставрополь (8652)20-65-13  
Тверь (4822)63-31-35  
Томск (3822)98-41-53  
Тула (4872)74-02-29  
Тюмень (3452)66-21-18  
Ульяновск (8422)24-23-59  
Уфа (347)229-48-12  
Челябинск (351)202-03-61  
Череповец (8202)49-02-64  
Ярославль (4852)69-52-93

Единый адрес для всех регионов: [ati@nt-rt.ru](mailto:ati@nt-rt.ru) || [www.ait.nt-rt.ru](http://www.ait.nt-rt.ru)